



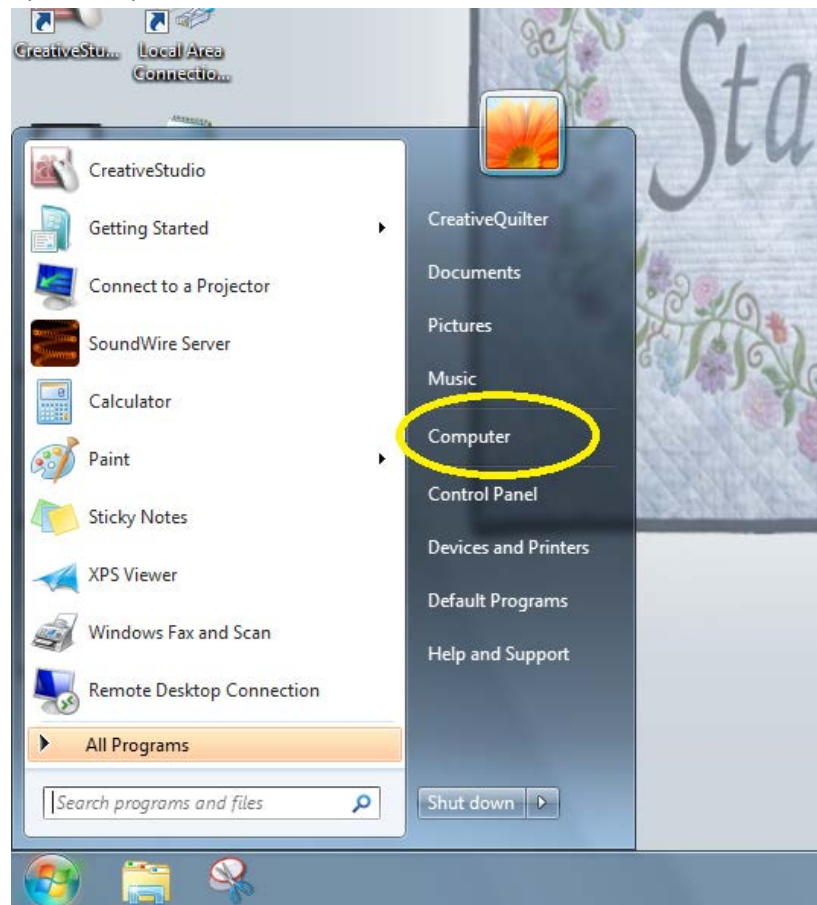
## CreativeStudio® 5.0 Installation Instructions

### Requirements:

- Windows 7 or greater
- Pre-existing Installation of CreativeStudio
- Downloaded CreativeStudio update file
- USB Flash Drive
- Controller firmware that is q4 or greater

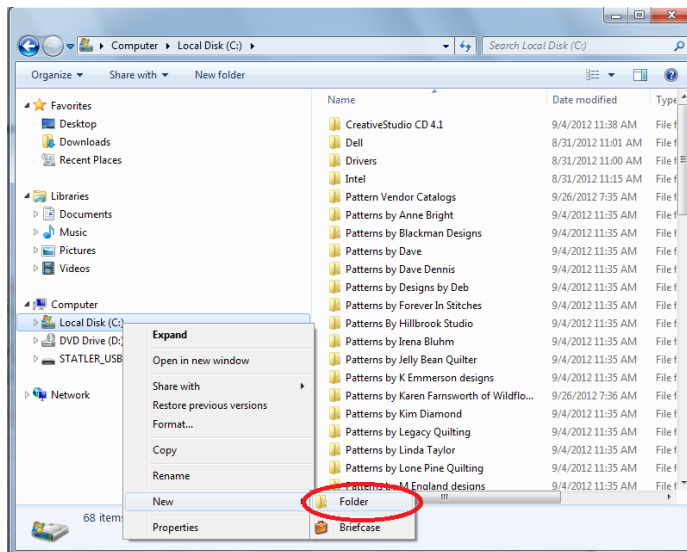
### Instructions:

1. Save Downloaded file to a flash drive.
2. On the PC to be updated create a new folder in the C:\ drive named **CS Updates**.
  - a. Open computer from the Start Menu.

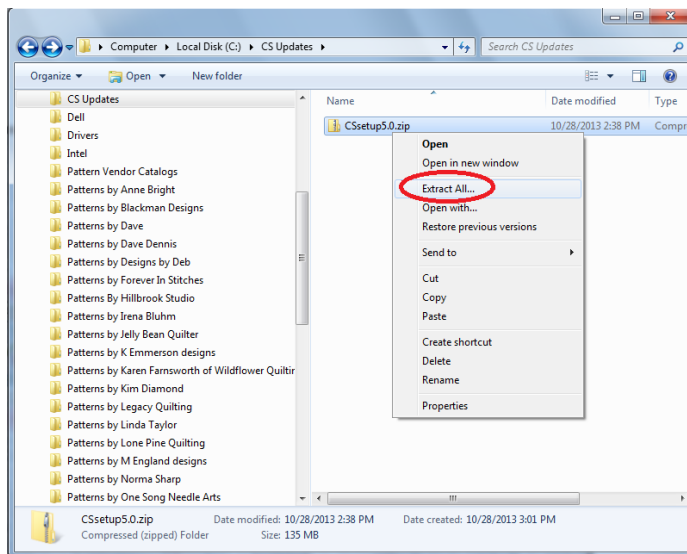


- b. Click on **Local Disk C:\**, may also be listed as **OS C:\**.

- c. Right Click on Local Disk C:\ (or OS C:\) to create a new folder named **CS Updates** unless it already exists.
- d. Choose **New>Folder**.

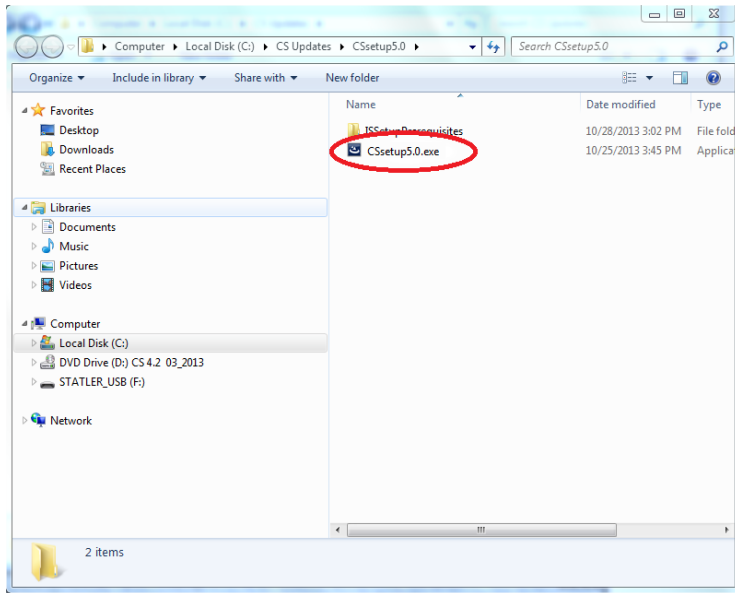


- e. Right click on the newly created folder.
  - f. Choose **Rename**.
  - g. Rename the folder **CS Updates**.
3. Insert the flash drive with the update and navigate to the flash drive to see the files.
  4. Copy the downloaded file from the flash drive to the CS updates folder.
  5. Prepare the file for use.
    - a. Right click on the copied file and choose **Extract All...**

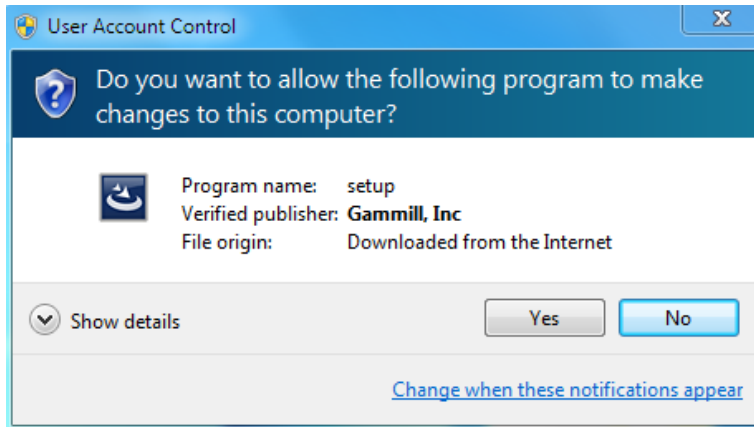


- b. Click on **Extract**.
6. When the extraction is complete, a new window will appear with the contents of the file.

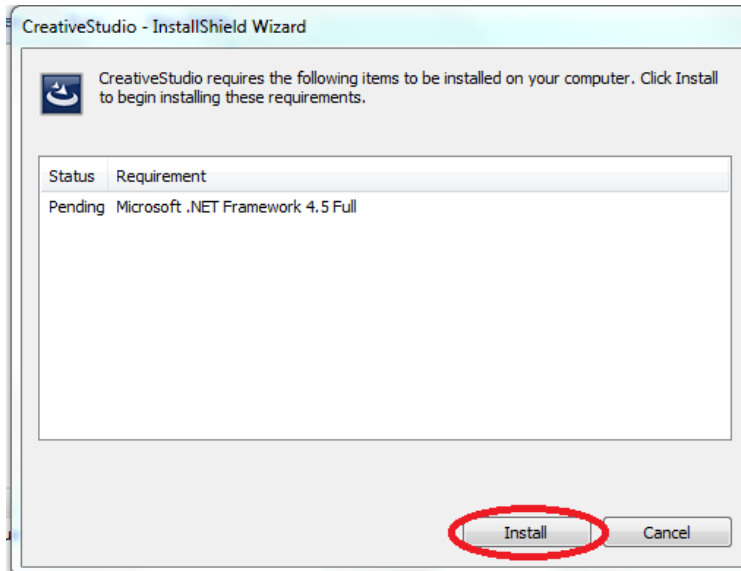
7. Double click on the Setup 5.0.exe to install the update.



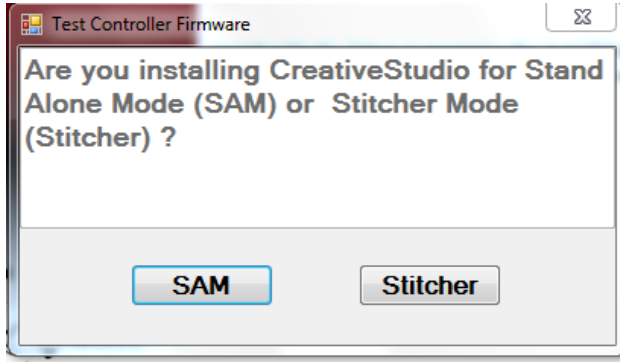
8. You may see a window like this, if so, answer **Yes**.



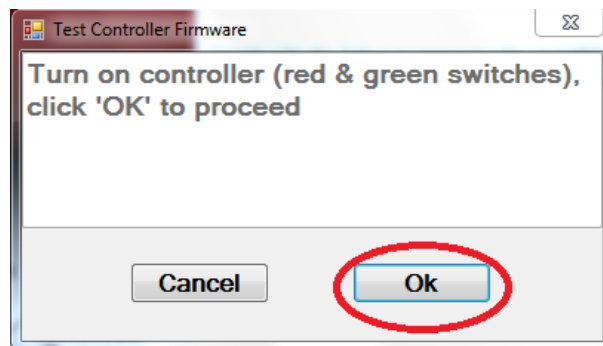
9. Wait for the Installation selection screen.  
10. Press **Install** to proceed with installing some pre-requisites.



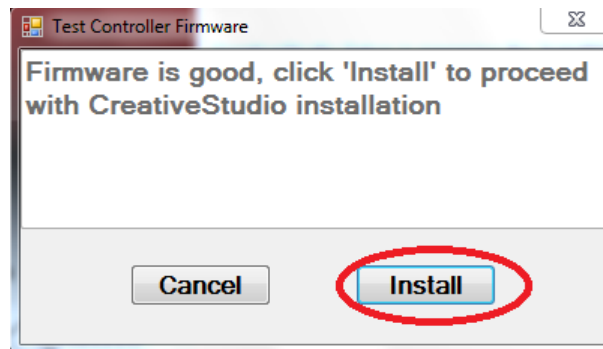
11. Choose Stand Alone Mode (**SAM**) or Stitcher Mode (**Stitcher**), depending on your installation preference. SAM is for operation without a Statler Stitcher System.



- a. SAM
  - i. Choose **Next** at the Screen.
  - ii. Accept the License Agreement, and click **Next**.
  - iii. Choose **Install** .
  - iv. Wait for CreativeStudio to ask your controller type. This must match your Statler Stitcher System MOD type. Click **Next**.
- b. Stitcher
  - i. Choose **OK** at the Screen after the Statler Stitcher system's red and green switches are turned on.

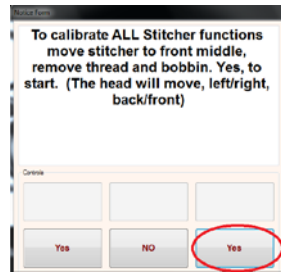


- ii. If your controller passes the firmware requirements, click **Install**. *Otherwise* Press **Cancel** and call 866-830-3738 and ask for a Firmware Upgrade Kit.



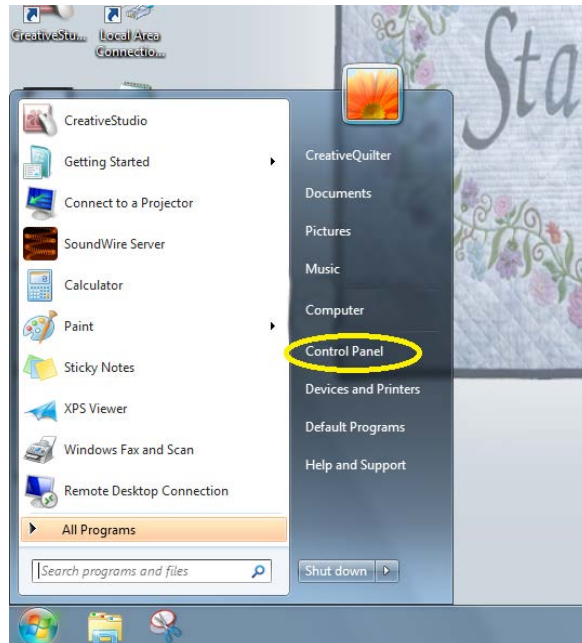
- iii. Chose **Next** to begin CreativeStudio Installation.
- iv. Accept the License Agreement, and click **Next**.
- v. Choose **Install** .

- vi. Wait for CreativeStudio to ask your controller type. This must match your Statler Stitcher System MOD type. Click **Next** and wait for CreativeStudio to open.
- vii. Press **Yes** to proceed with the one-time Calibrate All process.

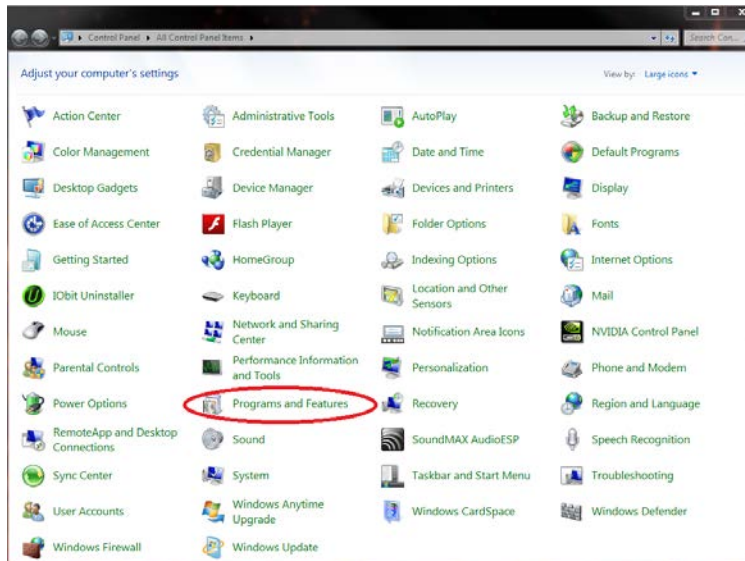


- viii. Exit CreativeStudio.

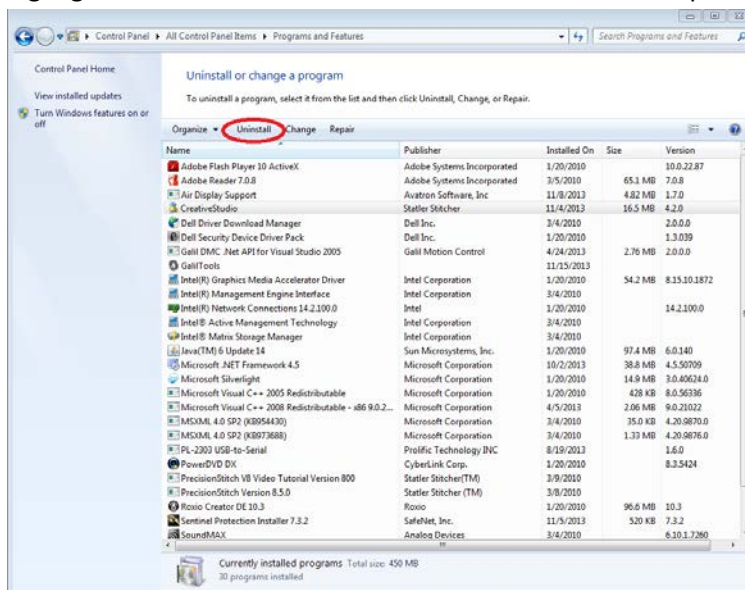
- 12. Uninstall the previous version of CreativeStudio (ie: 1.0, 3.0, 4.2, etc)
  - a. Click the Start button in Windows and chose **Control Panel**.



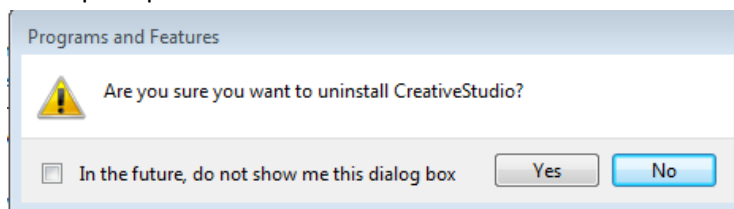
b. Choose **Programs and Features**.



c. Highlight **CreativeStudio** and choose **Uninstall** near the top of the screen.



d. When prompted answer **Yes**.



e. Restart the computer.

