

Gammill[®]

INSTRUCTIONS

1232019 - STATLER CONTROLLER FIRMWARE UPDATE

Parts Required:

(PROVIDED)

- 1-Galil Firmware Update Cable (serial cable)
- 1-Galil Firmware Update Adapter Cable (serial to USB cable)

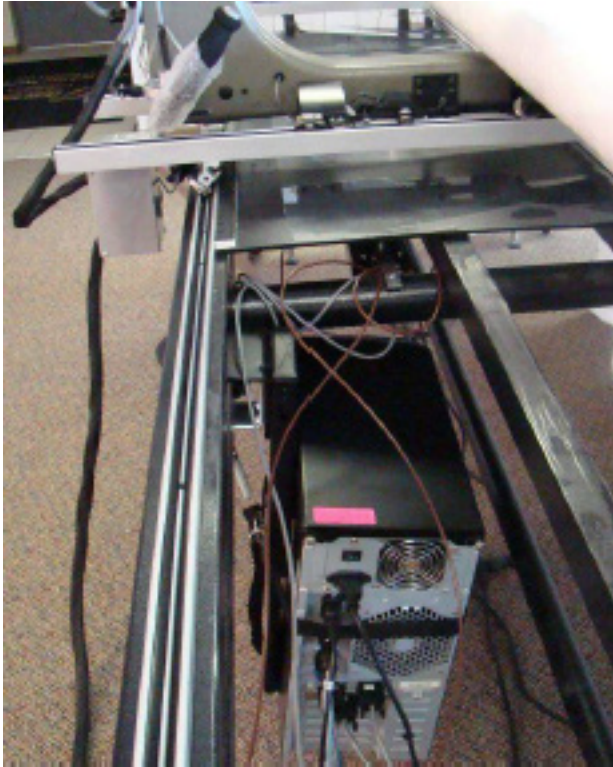
(NOT PROVIDED)

- Either a Phillips or Flathead Screwdriver Snips or Scissors to cut safety ties



IMPORTANT:

Before beginning this process, UNPLUG the power to the Controller.



STEP 1: If your Controller is mounted underneath the table on brackets, carefully remove half of the table top to view Controller.

Using either a Phillips or flathead screwdriver, remove the two thumb screws securing the lid.

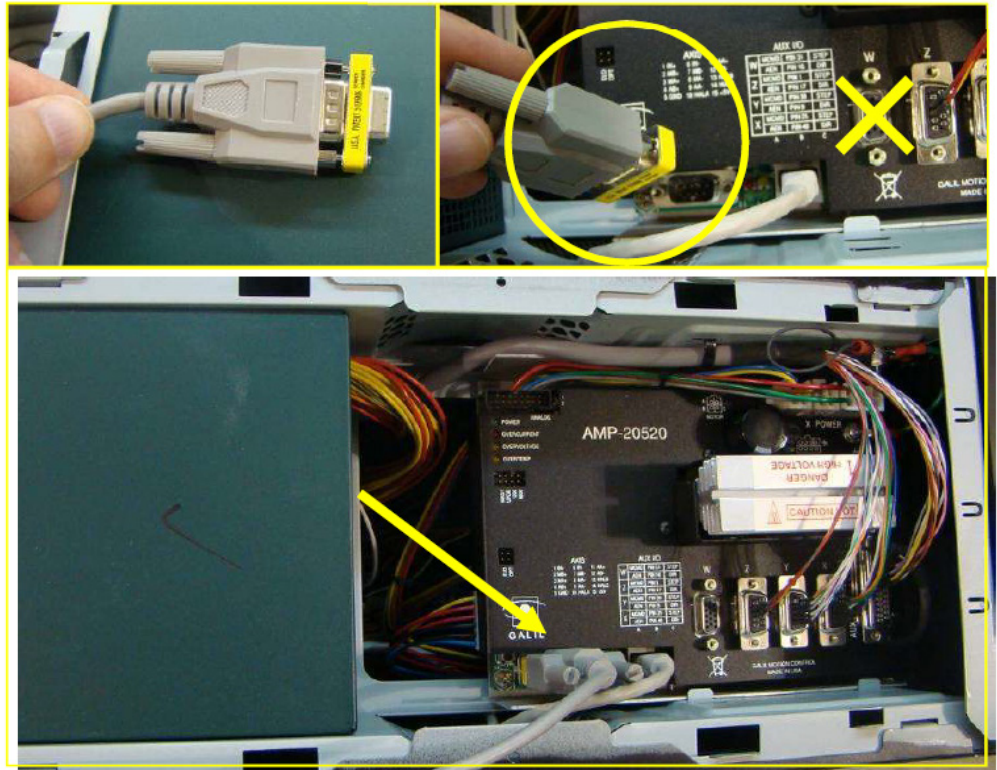
STEP 2: Remove the lid by sliding it towards the back of the Controller. A slight downward force may be necessary.



GAMMILL.COM

STEP 3: Plug in the serial end of the Upgrade cable to the Controller as shown using the end with the adapter attached.

Do not plug in the other end of the cable yet. Plug the power cords back into the Controller and switch it on.



STEP 4: Download the Firmware Upgrade Setup.exe file from Gammill.com/FirmwareInstructions



STEP 5: Run the Firmware Upgrade 2.1 Setup.exe to begin the Installation Launcher.

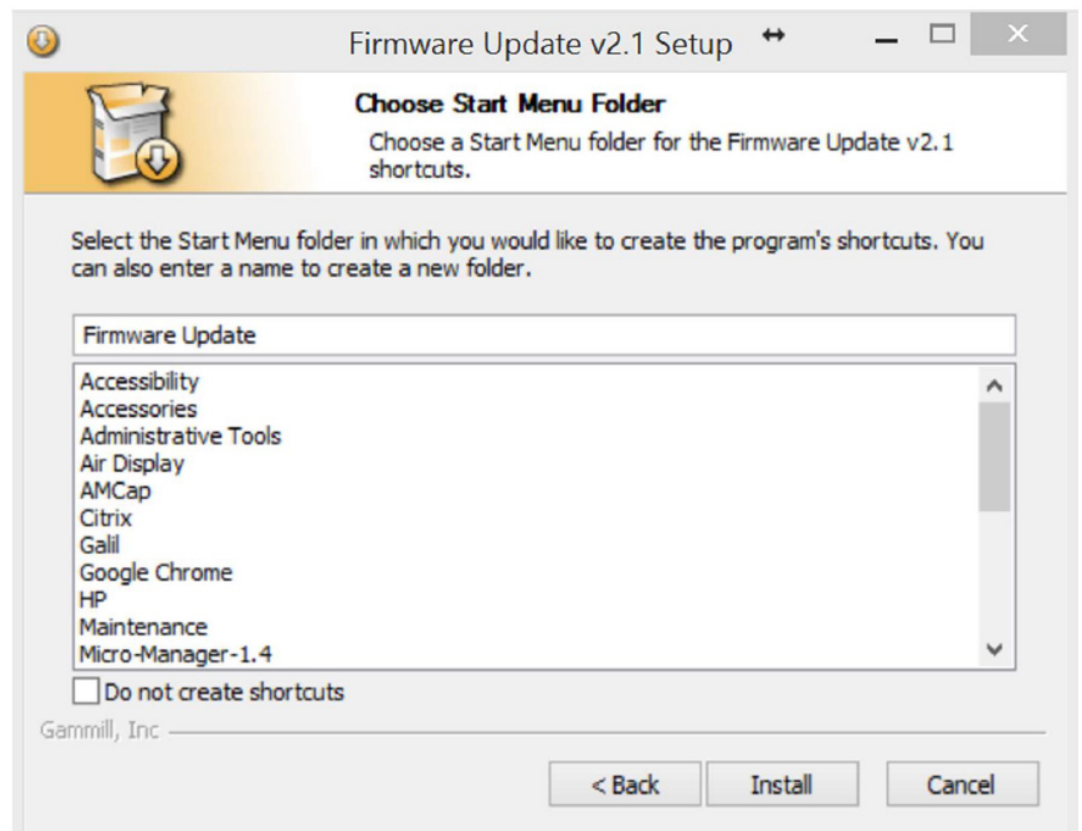
STEP 6: Wait for the program to load.

STEP 7: Click Next to proceed.

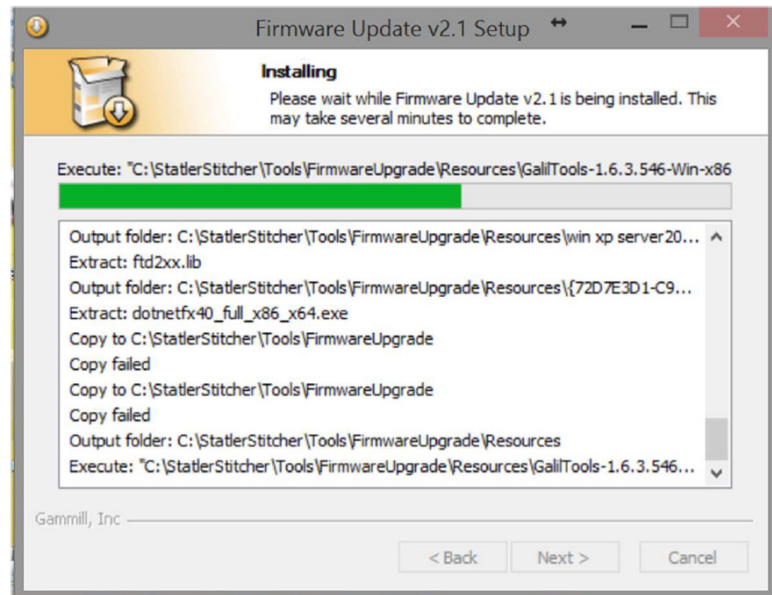


STEP 8:
Confirm the location of a Start Menu shortcut.

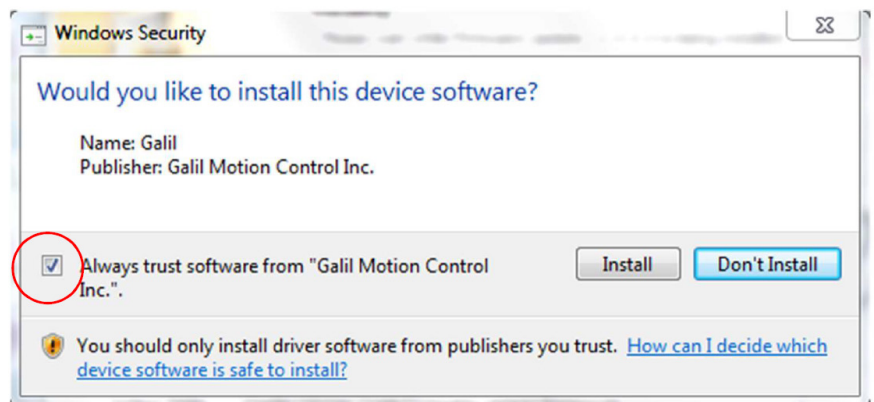
Click **Install** to proceed.



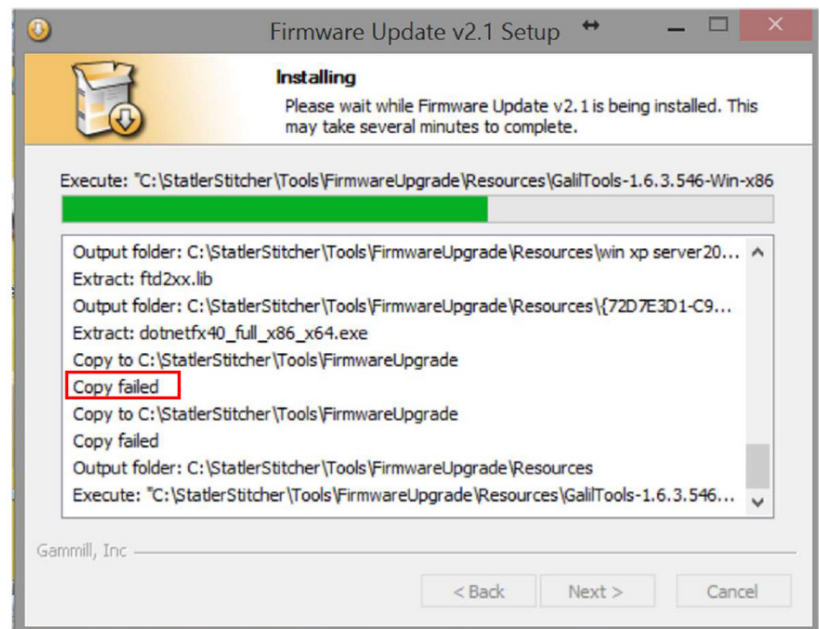
STEP 9: Wait for the next step.



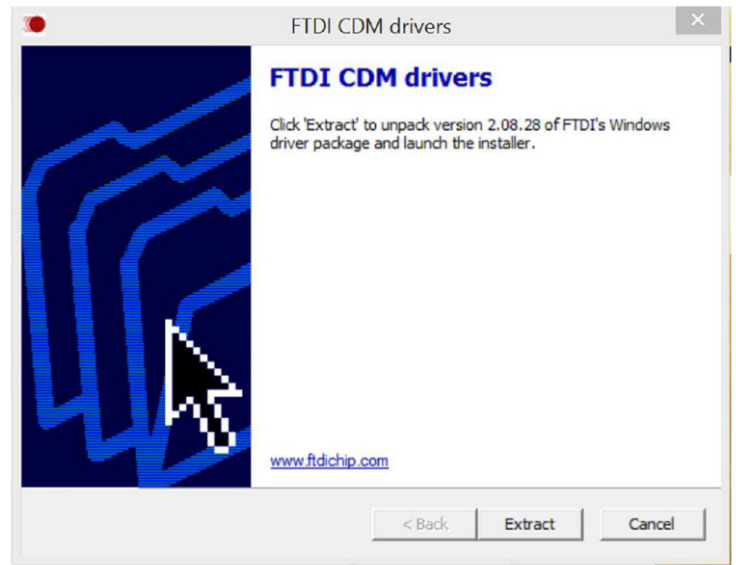
STEP 10: If you see this screen, check the box and click Install.



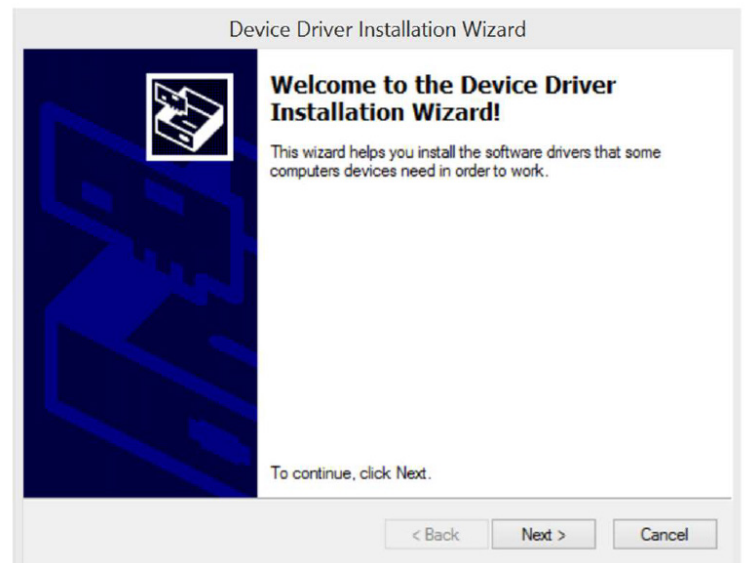
STEP 11: If you see Copy failed, do not worry, this is normal, continue waiting. This process can take several minutes.



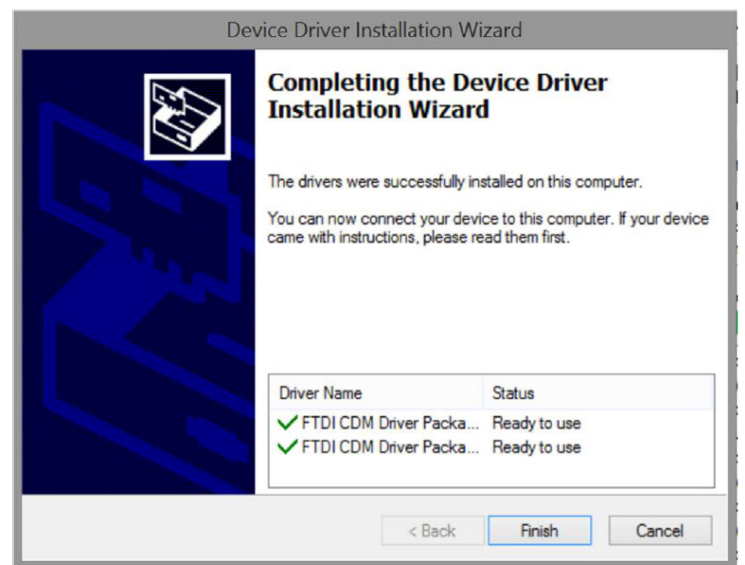
STEP 12: Click Extract.

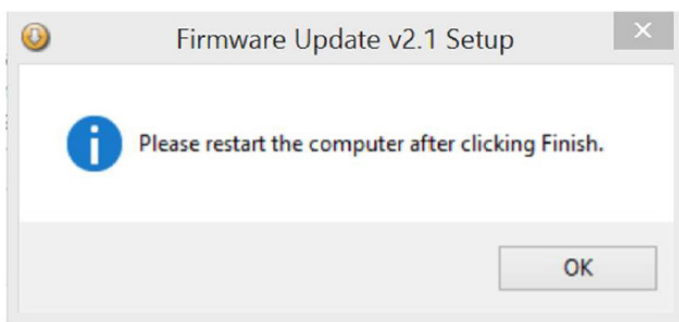


STEP 13: Click Next.



STEP 14: Click Finish.

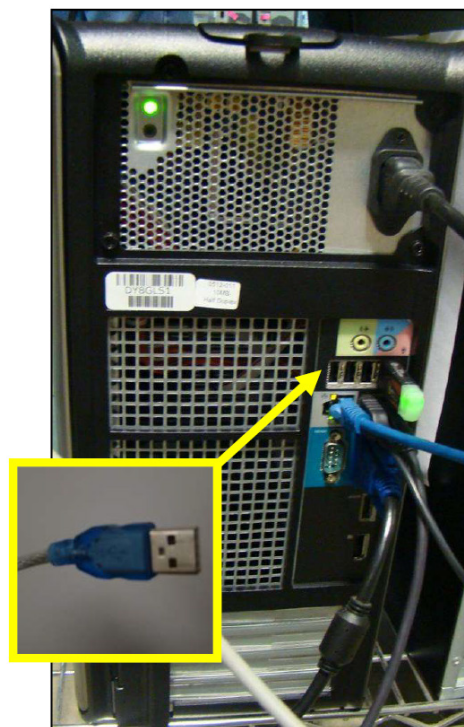
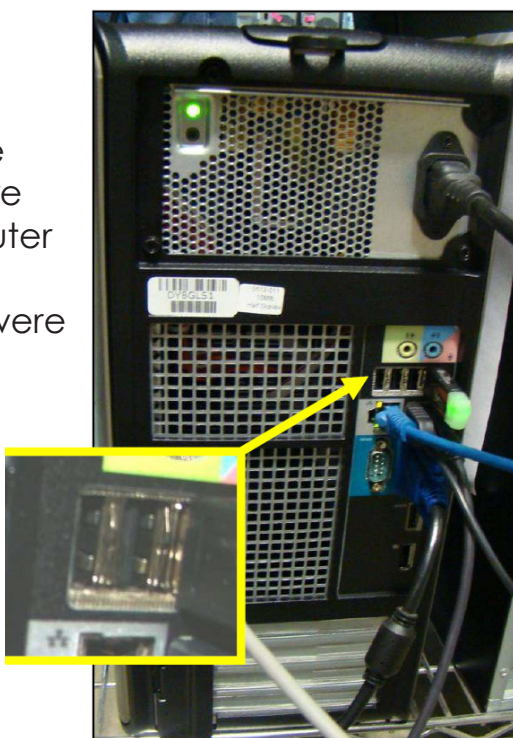




STEP 15: Click OK, then choose Reboot now and click Finish to complete the program installation.



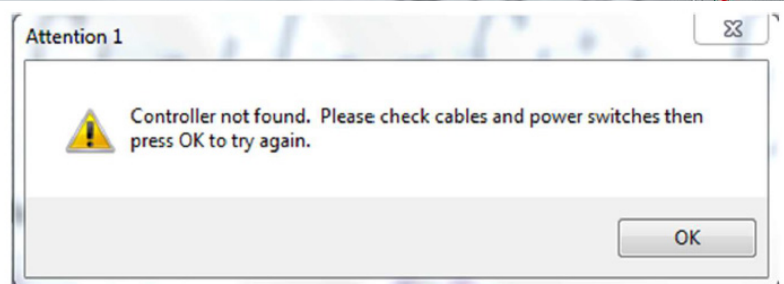
STEP 16: After the PC reboots, plug the USB portion of the Upgrade cable into any available USB slot on the PC. Ignore any errors on the computer screen. Also plug both cables together, if two were supplied.



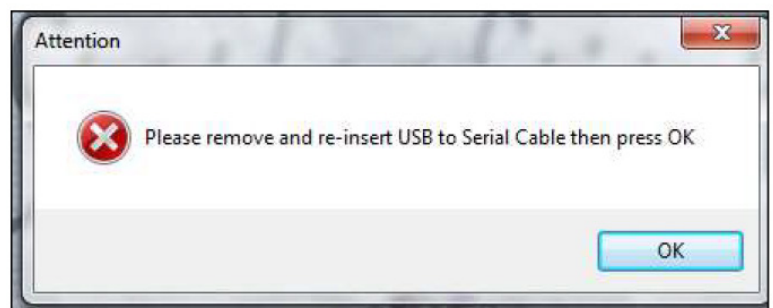
STEP 17: Ensure the controller is powered on and double click the Firmware Upgrade icon to begin the firmware upgrade process.



STEP 18: You may see this error. If so, check your connections and press **OK** to continue. Otherwise skip to step 20.

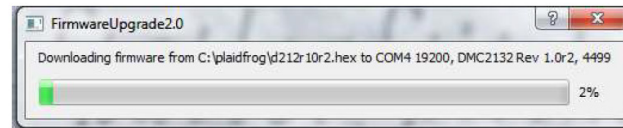


STEP 19: Remove and re- insert the USB end of the Upgrade cable, then click **OK**.

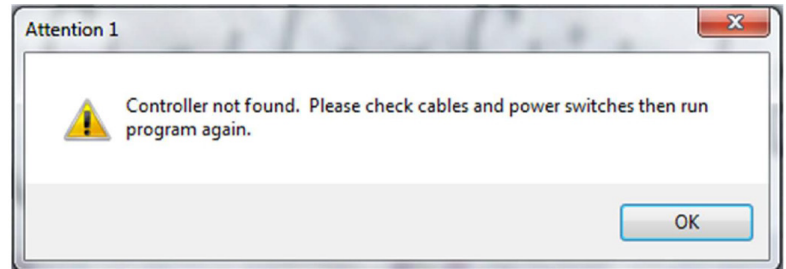


GAMMILL.COM

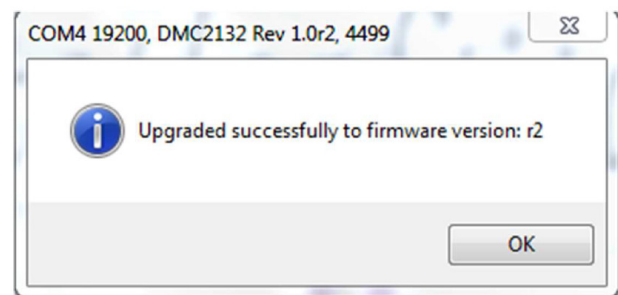
STEP 20: Please DO NOT turn off the power to the controller while this window is displayed. The process is final when you see the screenshot in step 22.



STEP 21: If the update fails for any reason, try again from step 17 or proceed to step 23.

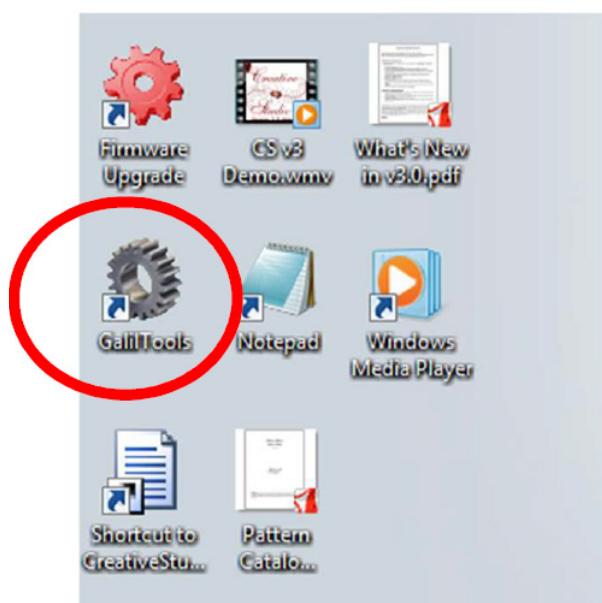


STEP 22: Click OK to close the window, shut the computer down and turn off the controller. Unplug both ends of the Upgrade cable and replace the lid of the controller. Replace the table top onto the table. Power on the controller and computer and resume use of the machine. You have successfully updated your firmware.

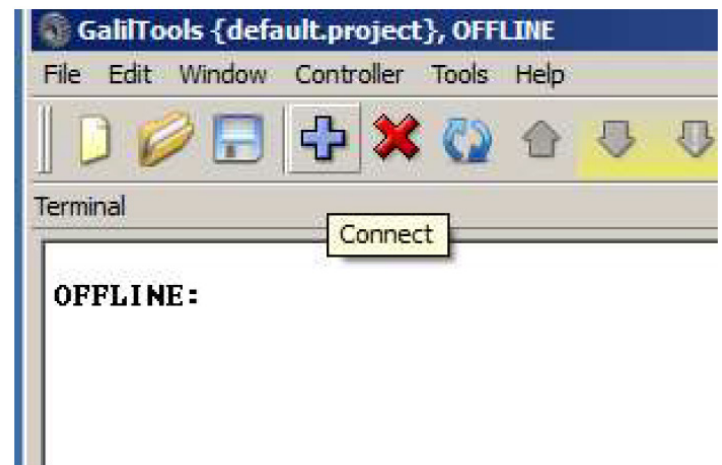


DO NOT PROCEED UNLESS INSTRUCTED TO DO SO

STEP 23: Open GalilTools from the Desktop.

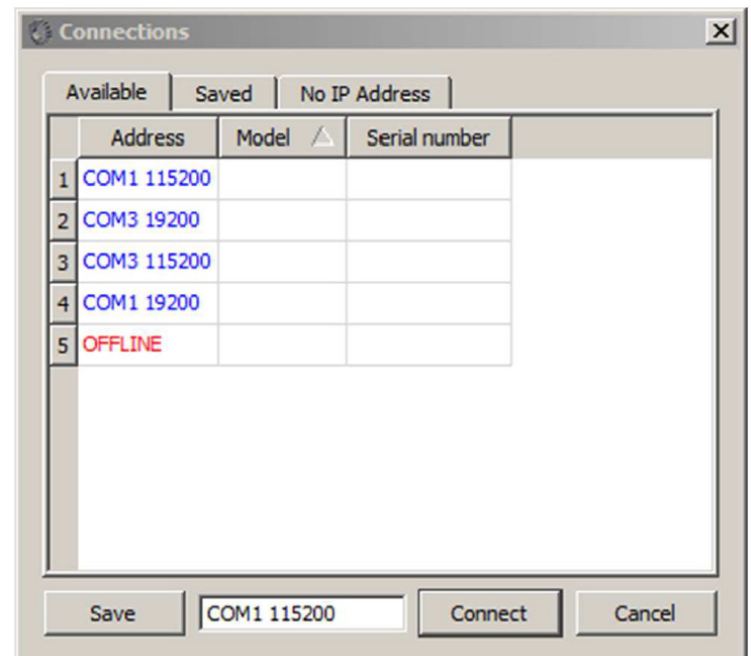


STEP 24: Connect to the controller by pressing

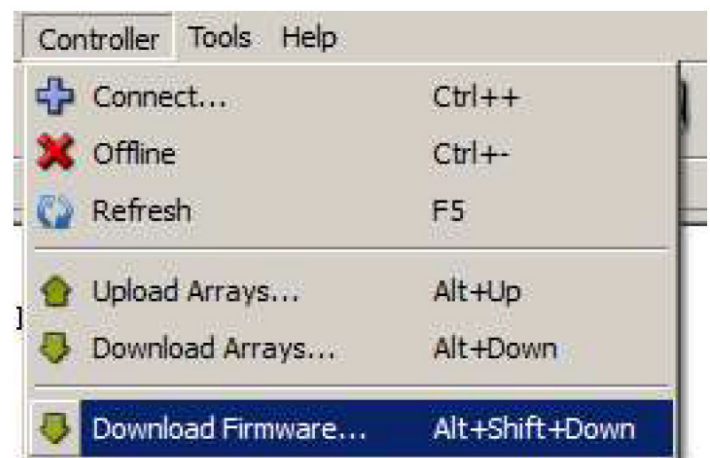


STEP 25: Individually try each COM port (ie COM1, COM2, etc) and press Connect until a connection is made.

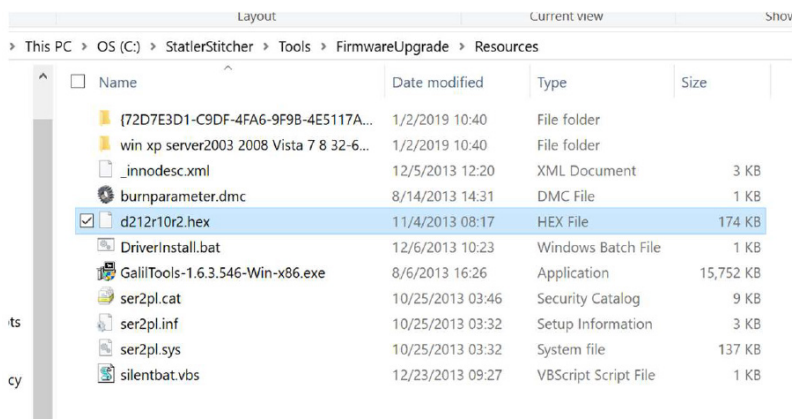
Ensure that the COM selected is followed by 19200.



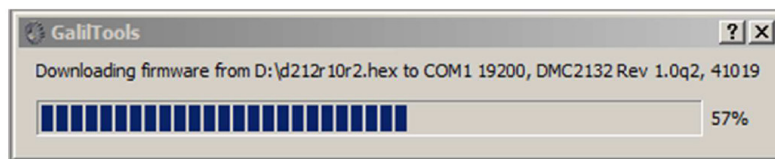
STEP 26: Upgrade the firmware by choosing **Controller>Download Firmware**



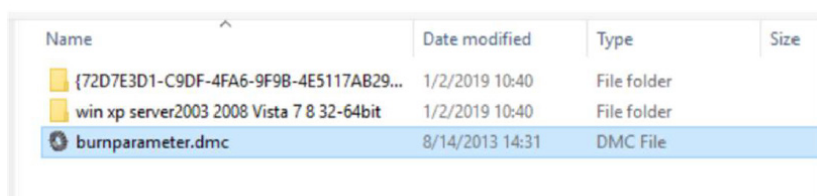
STEP 27: Choose c:\StatlerStitcher\Tools\FirmwareUpgrade\Resources\d12r10r2.hex from the file box.



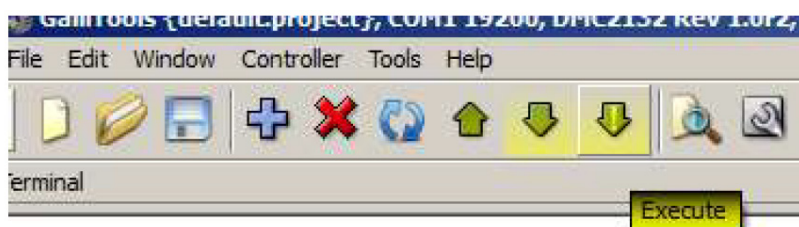
STEP 28: DO NOT UNPLUG OR TURN OFF POWER WHILE YOU SEE THIS SCREEN.



STEP 29: Choose **File>Open program** and open c:\StatlerStitcher\Tools\Firmwareupgrade\Resources\burnparameter.dmc.



STEP 30: Press the Execute button to download the necessary parameters into the Controller.



```
OFFLINE:
COM1 19200, DMC2132 Rev 1.0r2, 41019
:|
```

STEP 31: Close the window and shut the computer down. Unplug both ends of the Upgrade cable and replace the lid of the controller. Replace the table top onto the table. Plug the power cords back in, power on the controller and computer then resume use of the machine. You have successfully updated your firmware.

**IF YOU HAVE ANY QUESTIONS REGARDING THIS PROCEDURE,
PLEASE CONTACT GAMMILL AT 800-659-8224.**

GAMMILL.COM