

# *Statler Stitcher*



CreativeStudio™  
V1.0.0  
Installation Guide

CreativeStudio™ must be installed from a program CD.

You will need to know the current configuration used for your system. This can be done by looking at your controller/power supply to find the MOD x or by going to Help—About in PrecisionStitch™.

### Examples of controllers/Power Supplies and labels



MOD 3

MOD E

MOD G

Controllers/Power Supplies are normally identified by the MOD. Valid MOD's are MOD3, A, B, C, D, E, F and G. MOD A's may not have a label, as some older MOD 3's

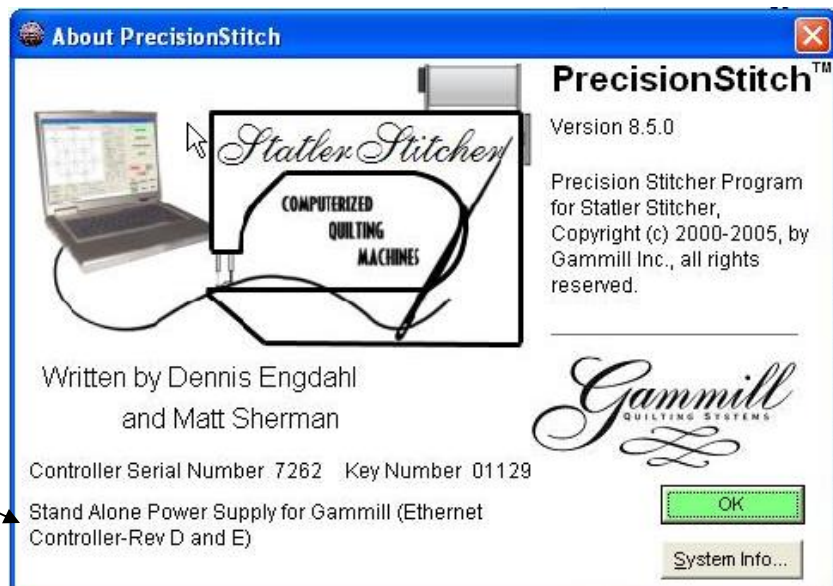
MOD 3's could also be with 2135 motors or 3934 motors, looking at Help-About will help to identify the correct setting.

Looking at Help—About

The setup is shown here, and would be:

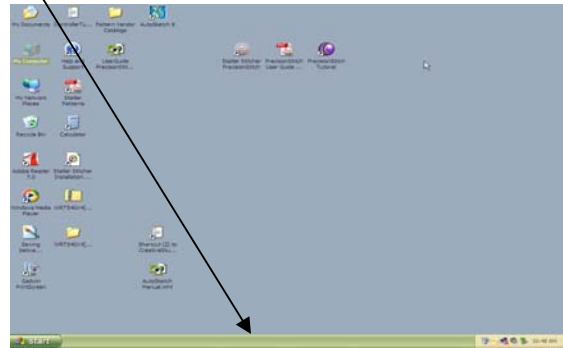
Stand Alone Power Supply for Gammill (Ethernet Controller-Rev D and E)

Note: (Rev = MOD)



Exit All Programs before proceeding. The computer should be at the desktop with no applications showing in the taskbar at the bottom of the screen.

Start Point is at the Desktop



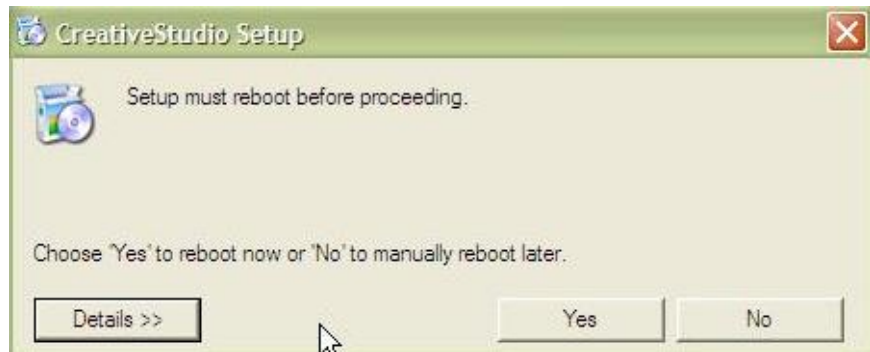
Carefully place the CreativeStudio™ (CS) program CD into the CD drive tray. The CD Label must be facing up. The CD should autorun to begin the installation process.

The first process installs drivers.  
Click on **Install** to begin the Process.



After the drivers are installed, the system must be rebooted.

Click **Yes** to reboot and continue.



After the system reboots, installation continues as show with this Windows Installer

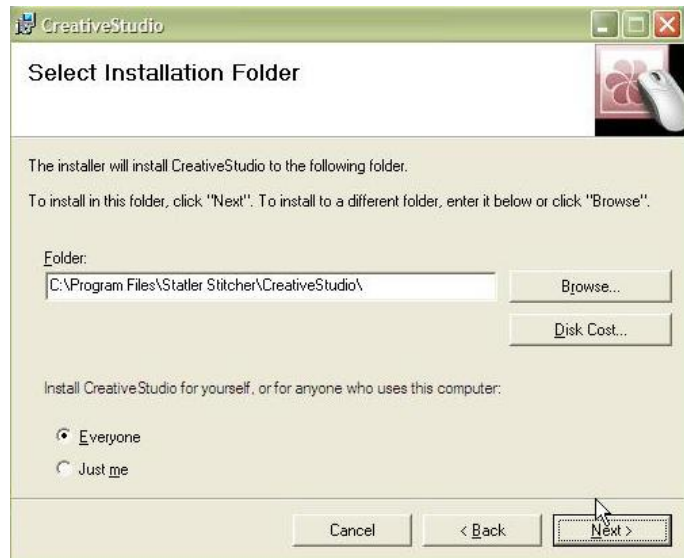


The Welcome to the CreativeStudio™ Setup Wizard will then be displayed.



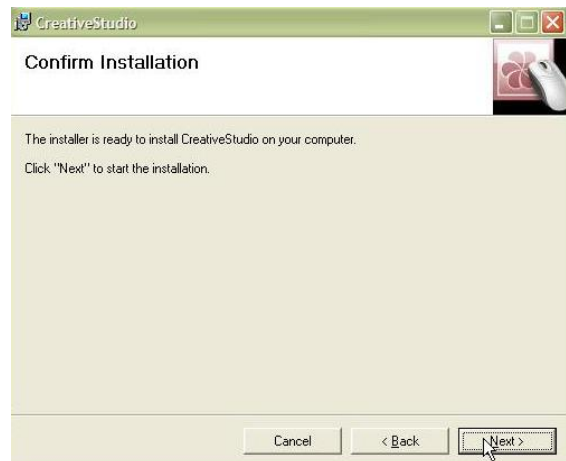
Click on Next to continue with the installation.

Select Installation Folder. No change is required to these settings.



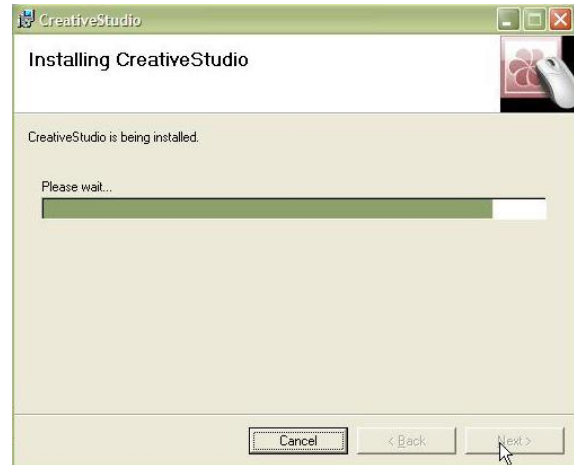
Click on Next to continue with the installation.

The Confirm Installation is then Presented. Here you have the chance to go back a step if needed.



Click on Next to continue with the installation.

Installing CreativeStudio™ This window shows the progress of the installation.

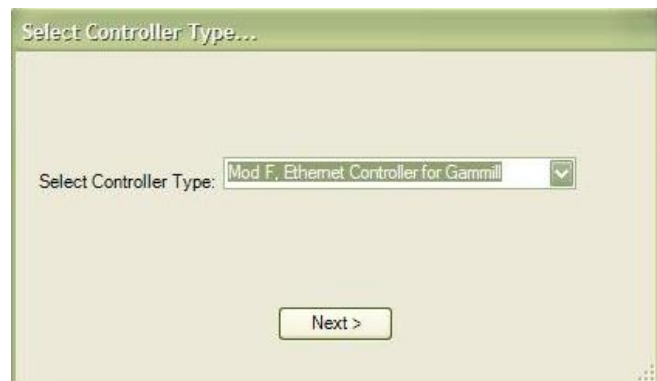


\*\*\*\*\*

This window requires your Attention.

Select Controller Type

\*\*\*\*\*



Do Not Continue if you do not Know which setup to use

\*\*\*\*\*

Click the drop down arrow to display the different setups (MOD's)  
Click on the setup that matches Your system.

\*\*\*\*\*



\*\*\*\*\*

After selecting the setup, Be sure it is displayed.

Click next to continue

\*\*\*\*\*

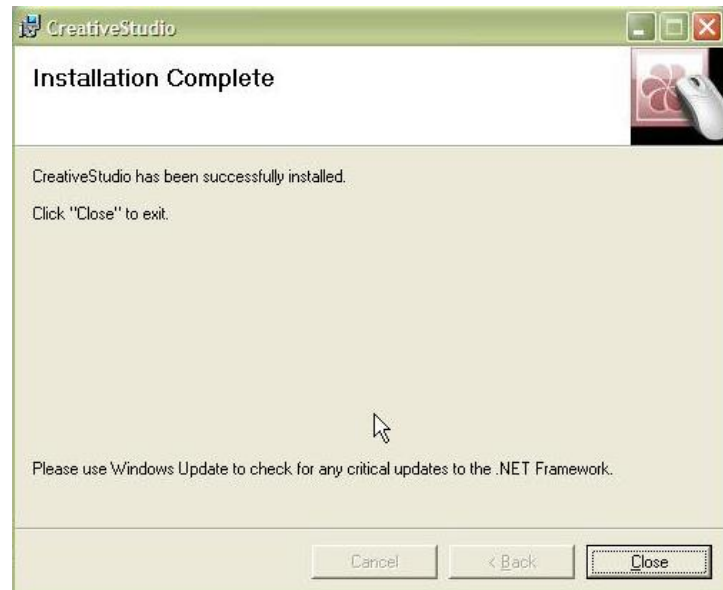




Installation Complete

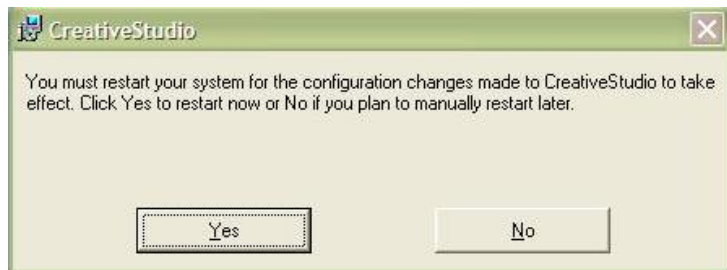
The program is now installed.

Click Close

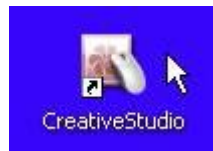


Restart the Computer

Click Yes to Restart the computer



The CreativeStudio™ Icon will now Appear on the desktop

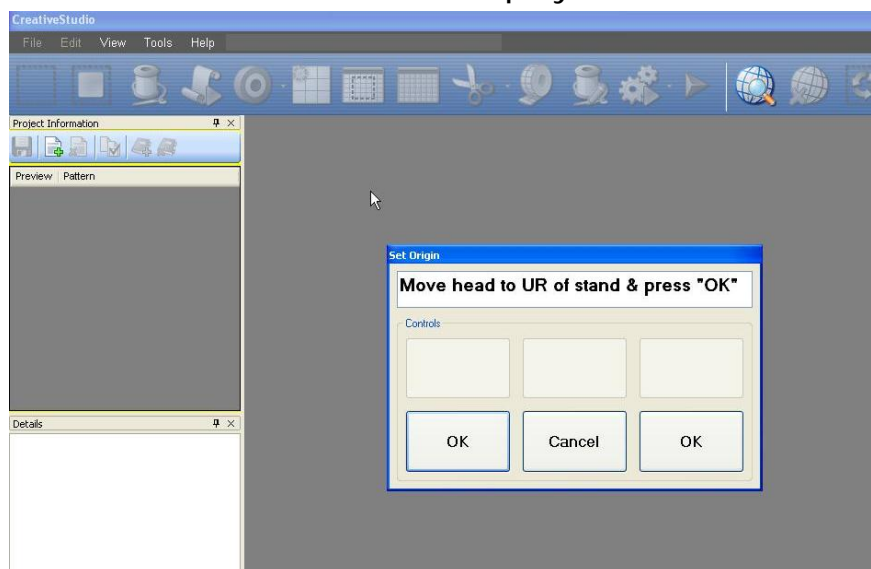


Double Click to Start CreativeStudio™

After startup and title screen, the main CS screen displayed.

Begin by choosing a common point of Origin. Review the User Guide if needed.

Click OK to mark that location.



**Important:**

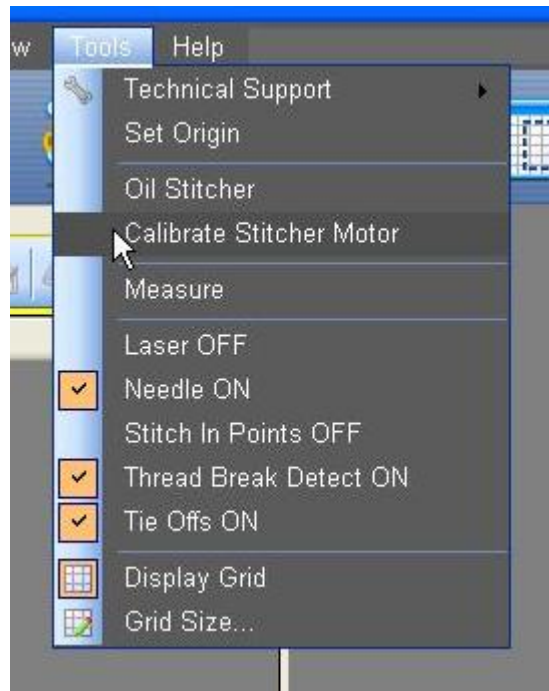
Go to the Tools menu on top of the screen. Click on Tools to access the drop down menu.



From the drop down menu, Click on Calibrate Stitcher Motor.

Follow the on screen instructions

CreativeStudio™ is now ready to Use.



There are situations in which other dialog boxes appear. If you are not able to work through any such situation with the installation process, please contact Statler Stitcher Technical Support. You can send an email to [support@statlerstitcher.com](mailto:support@statlerstitcher.com) or call 1 866-830-3738 menu option 2.

If you are not able to determine the correct setup for your system, please call.

Thank You, and enjoy CreativeStudio™  
Statler Stitcher™