



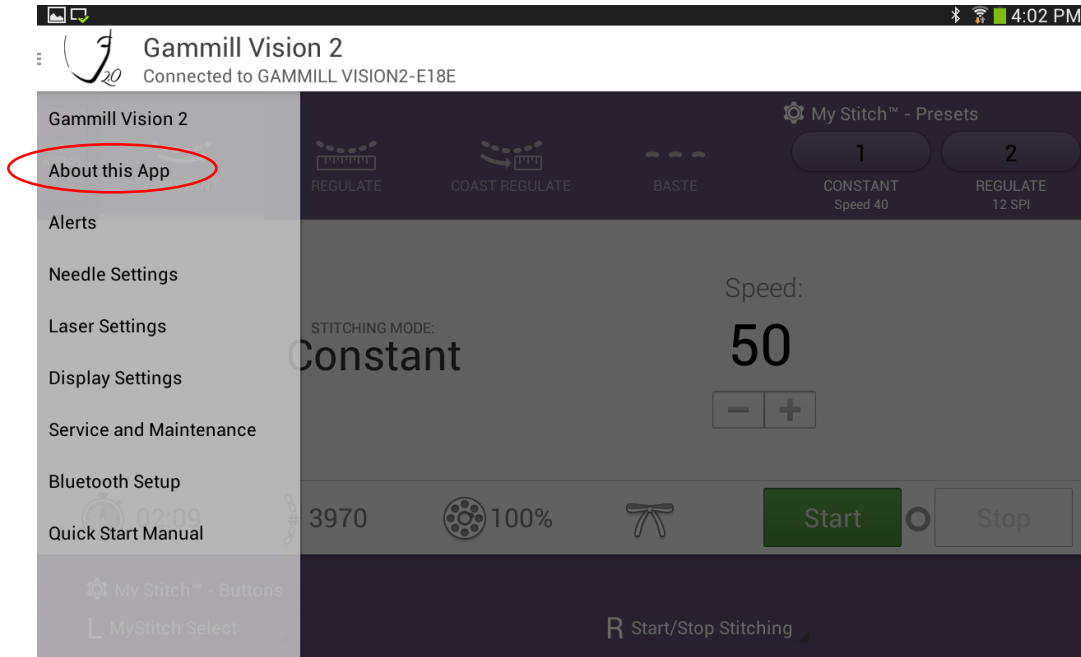
Updating the Vision 2.0 Application

CI-V2-0002 Rev 00

UPDATING THE APP

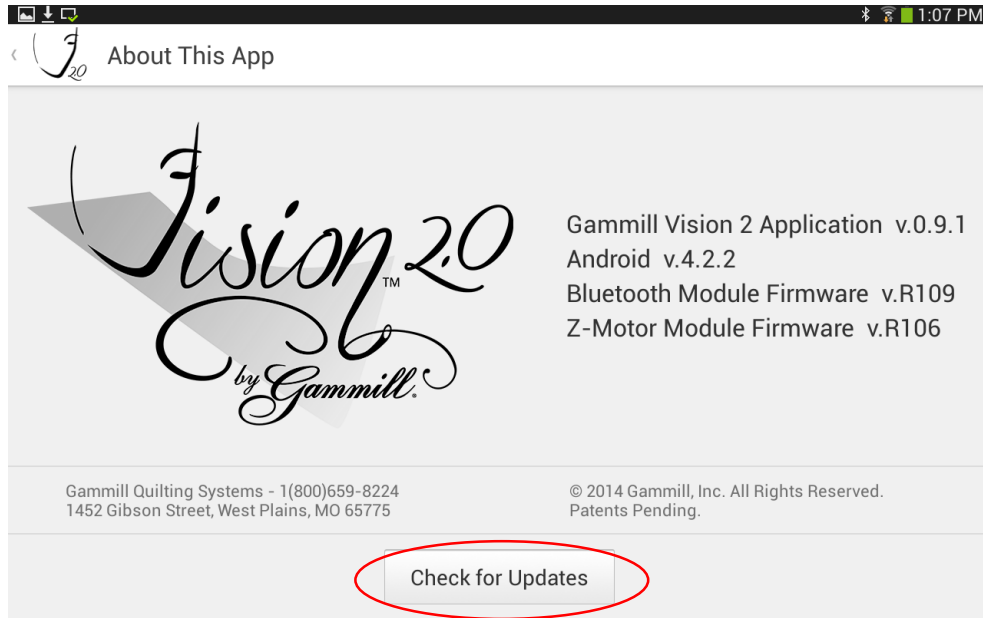
Access the About This App selection to learn information about your current version of the Vision™ 2.0 application and check for software updates.

THIS FUNCTION REQUIRES THE TABLET BE CONNECTED TO THE INTERNET THROUGH A USER-SUPPLIED WIRELESS NETWORK. FOR INFORMATION ON HOW TO DO THIS, CONSULT THE DOCUMENTATION THAT CAME WITH THE TABLET OR SEE THE *ENABLE WIRELESS ON TABLET* SECTION IN THE VISION 2 SERVICE MANUAL FOR ADDITIONAL INFORMATION.



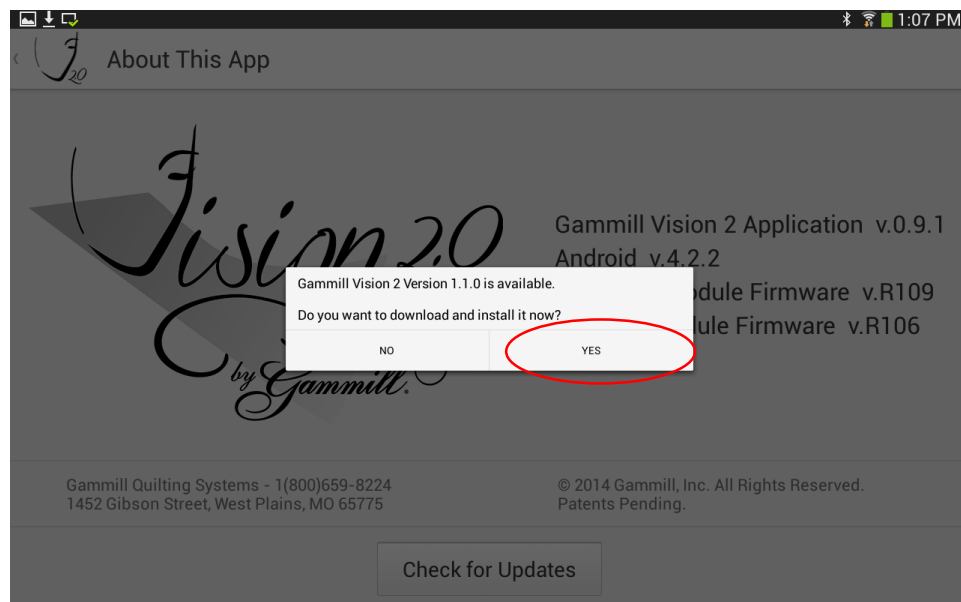
To check for updates:

- Make sure the tablet is connected to the internet.
- Select **About this App** from the Menu options.
- Touch the **Check for Updates** button.
- Notice an update window opens indicating whether or not an update is available.

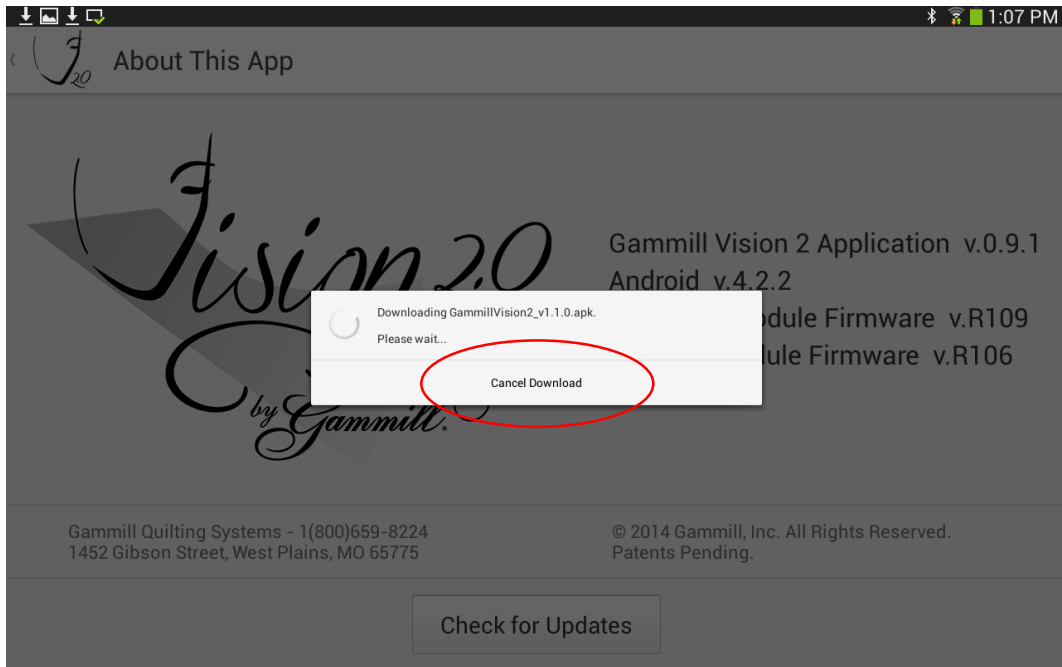


To update the Vision™ 2.0 Application:

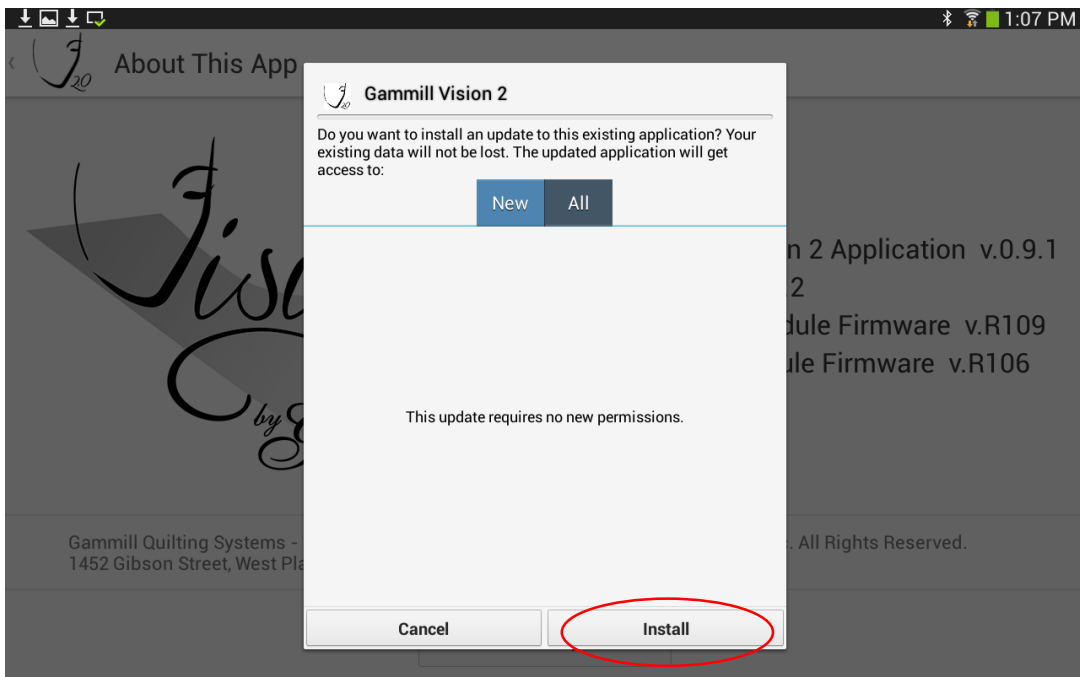
- Touch the **YES** button.
- Notice the update begins downloading.
- Please wait while the app downloads from the Gammill website.



THE DOWNLOAD MAY BE CANCELLED AT ANYTIME BY PRESSING THE **CANCEL DOWNLOAD** BUTTON.



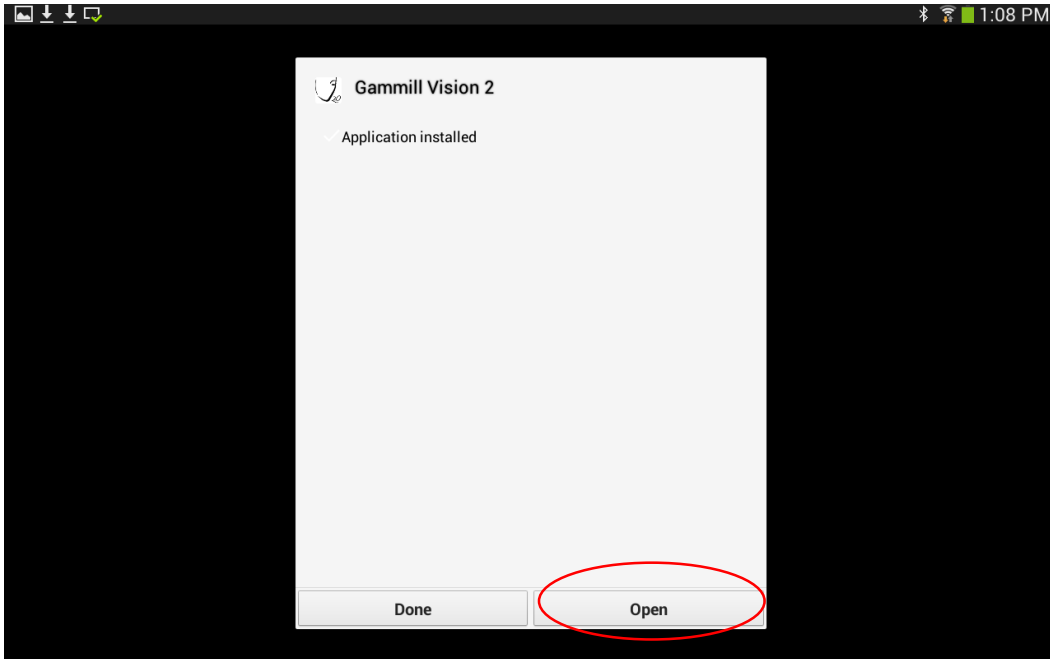
- Once downloaded, a window will appear for permission to install the update.
- Press **Install** to begin the update.



The app will automatically update and prompt you when complete.

To open the updated app:

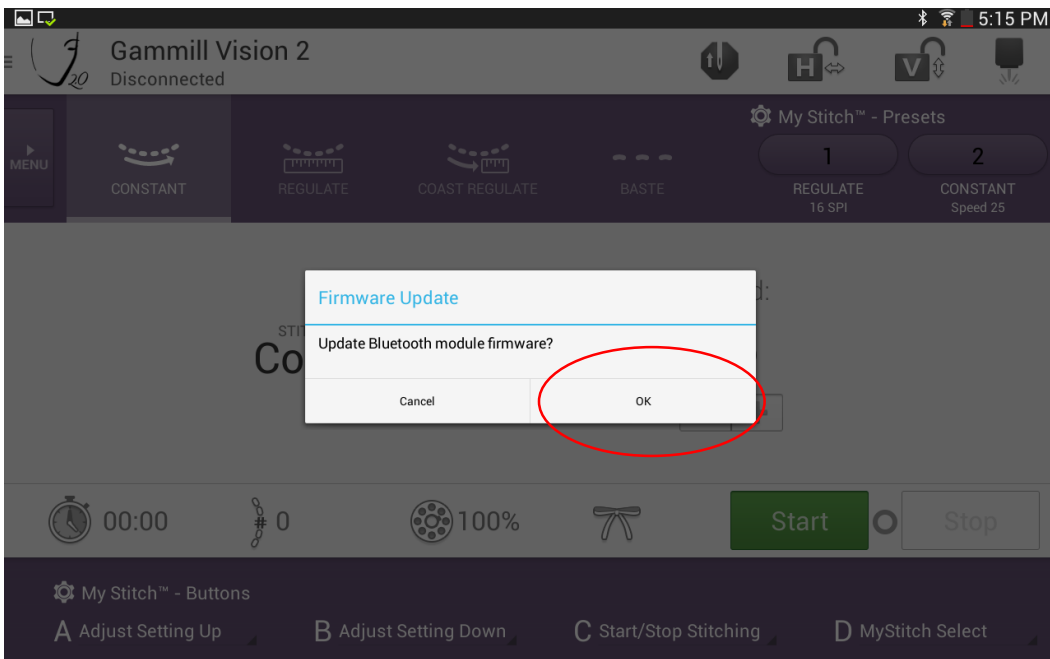
- Tap the **Open** button.



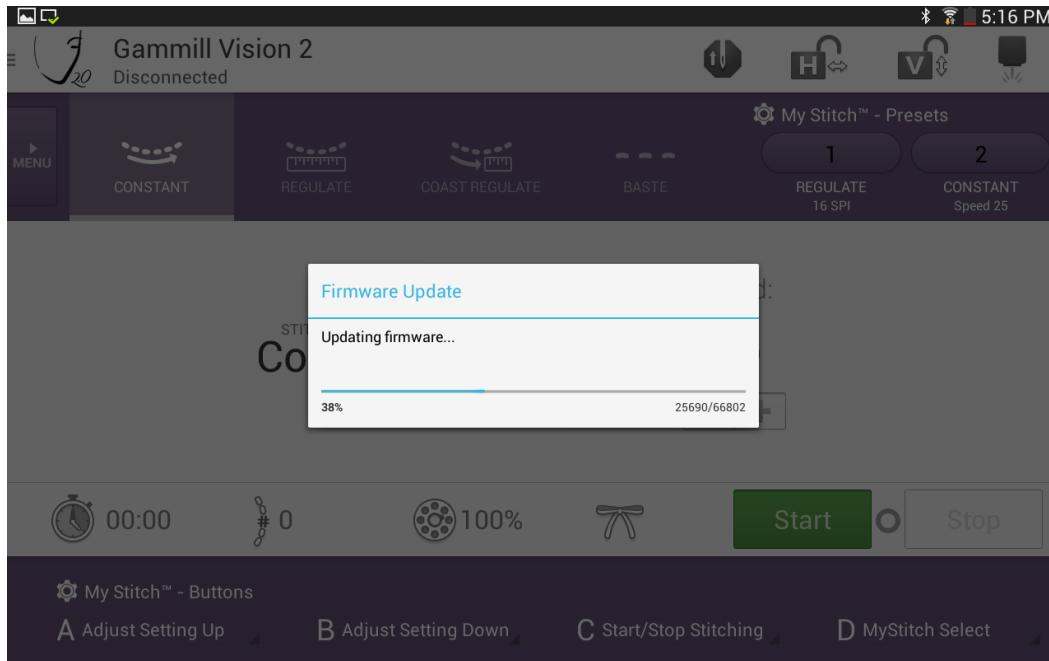
When the app connects to the machine, it will prompt you to update the machine firmware.

Continue to the Firmware Update:

- Press **OK** to begin the update.



ONCE STARTED, DO NOT INTERRUPT THE UPDATE BY USING THE TABLET OR MACHINE.
PLEASE WAIT FOR THE UPDATE TO FINISH.



ONCE THE UPDATE IS COMPLETE, THE BLUETOOTH CONTROL BOARD WILL
AUTOMATICALLY RESET AND RECONNECT TO THE APPLICATION.

Now the update is complete.