

PrecisionStitch v8.0.0

Installation

Before starting, **close all programs**

With explorer (My Computer) locate the setup800.exe and double click to begin the installation.

PrecisionStitch
Setup

Click **Next** 



This step applies to users with a **RED** security key which plugs into a USB port.

Click **Next** 

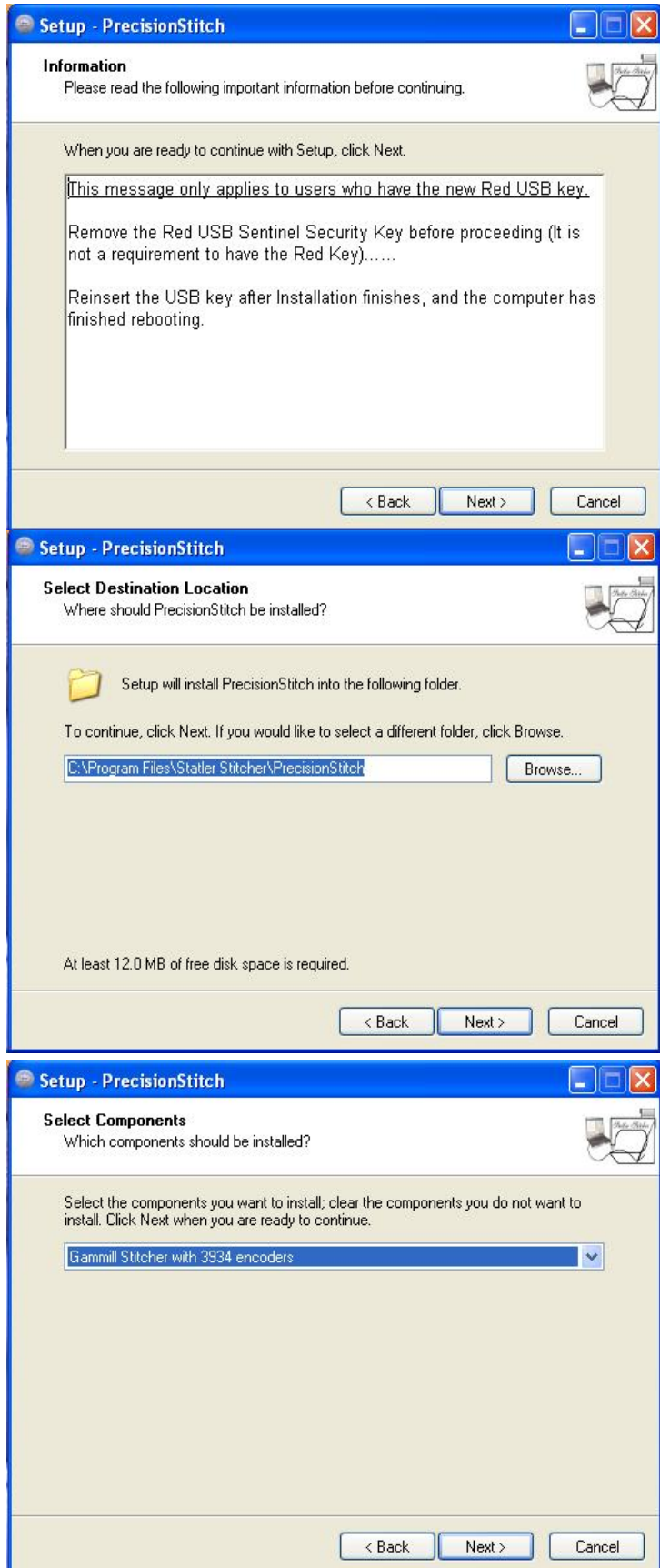
Select the destination Folder for PS

Click **Next** 

STOP!

This screen needs your attention. You must select the correct setting for your system.

If you do not know the correct setting, call Statler Stitcher
1-(866) 830-3738
Customer Support



Select your components
From the drop down.
Click on the correct setup.
Look for the Controller MOD of
your system and select.
(note: Some MOD A units have no label
But do have an Ethernet cable)

Click **Next** 

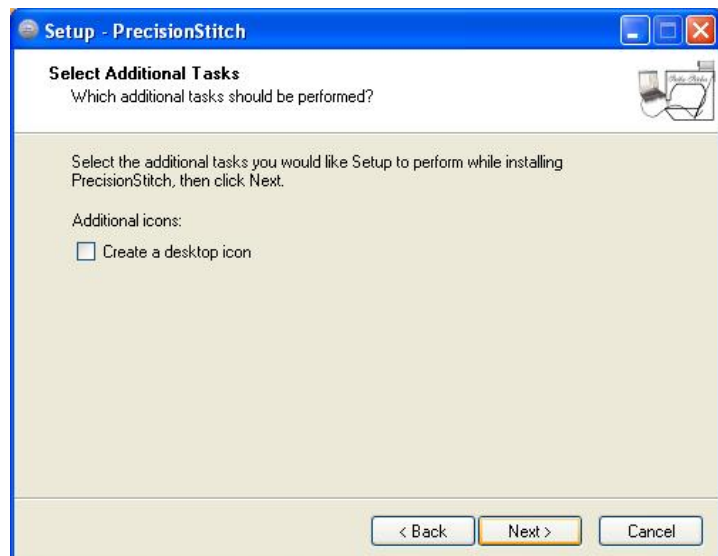
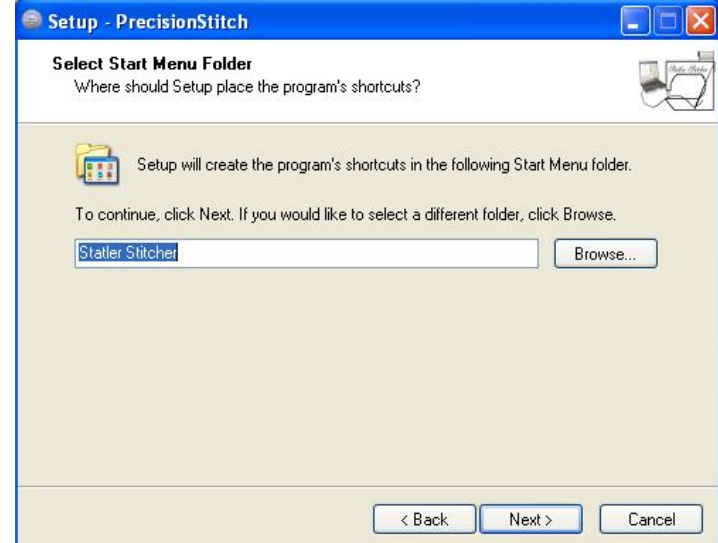
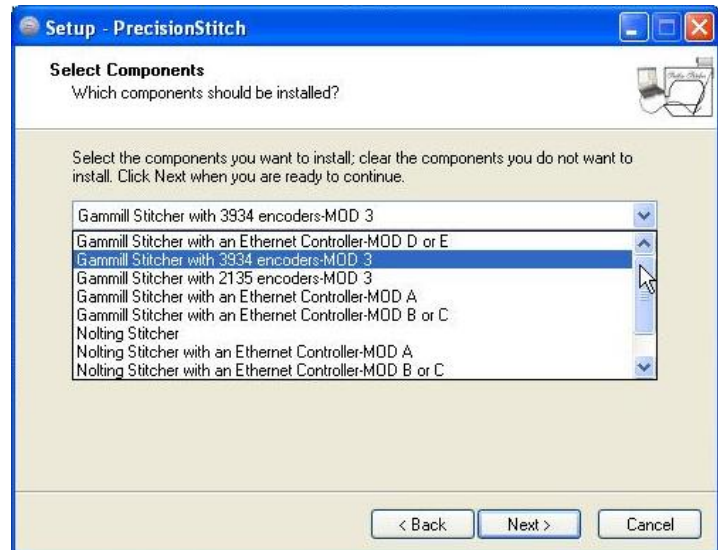
Selecting the Start Menu
Folder

Do Not Change

Click **Next** 

Create an Icon on the Desktop.
Click on checkbox to place an
icon on the desktop

Click **Next** 

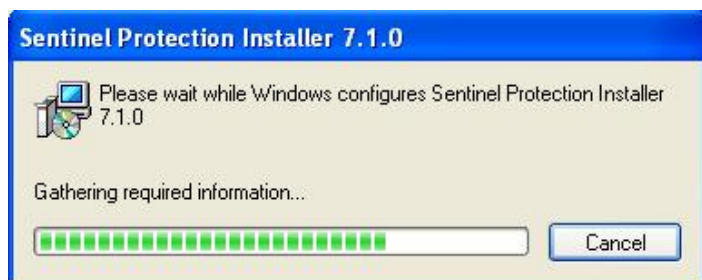
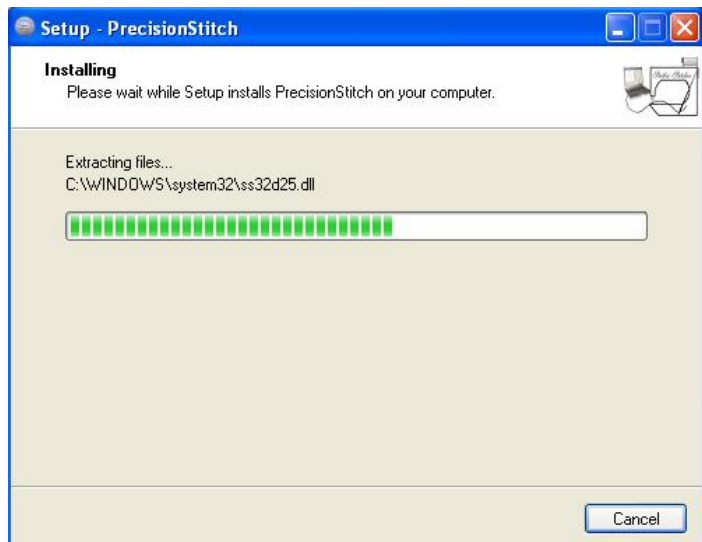
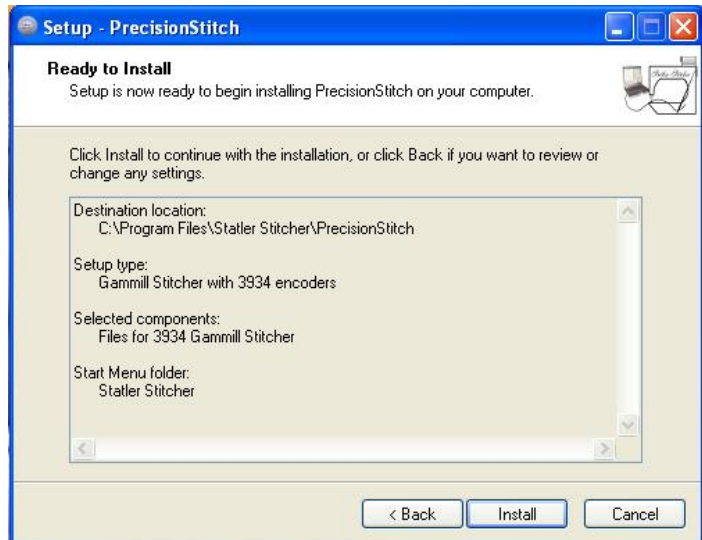


Ready to Install
PrecisionStitch

Click **Install** 

Installation progress is
Displayed

Sentinel Install progress



PS installation is Complete

The computer must be re-started

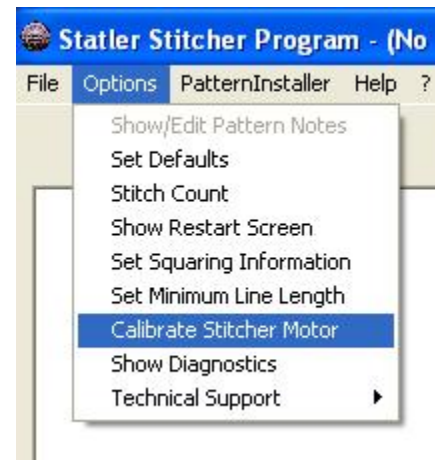
Click **Finish** 



After the computer has restarted.
Double Click the PrecisionStitch Icon.

Go to the **Option** menu at the top of the screen
and select **Calibrate Stitcher Motor**

Follow the on screen instructions



Patterns.exe—Double Click this file to install the patterns. Do not use the pattern installer.

During the installation, clicking cancel or closing a window will discontinue the installation of that Item you were installing. Installation will continue with the next item.

If you are not sure of this procedure, or you have questions, Call Statler Stitches Customer Support @ 1(866) 830-3738 #2(toll free) or email your question to support@statlerstitcher.com

Thanks